

Safety and Security

Guiding Principle: Consider the need to improve safety and security in district facilities to better protect staff and students.

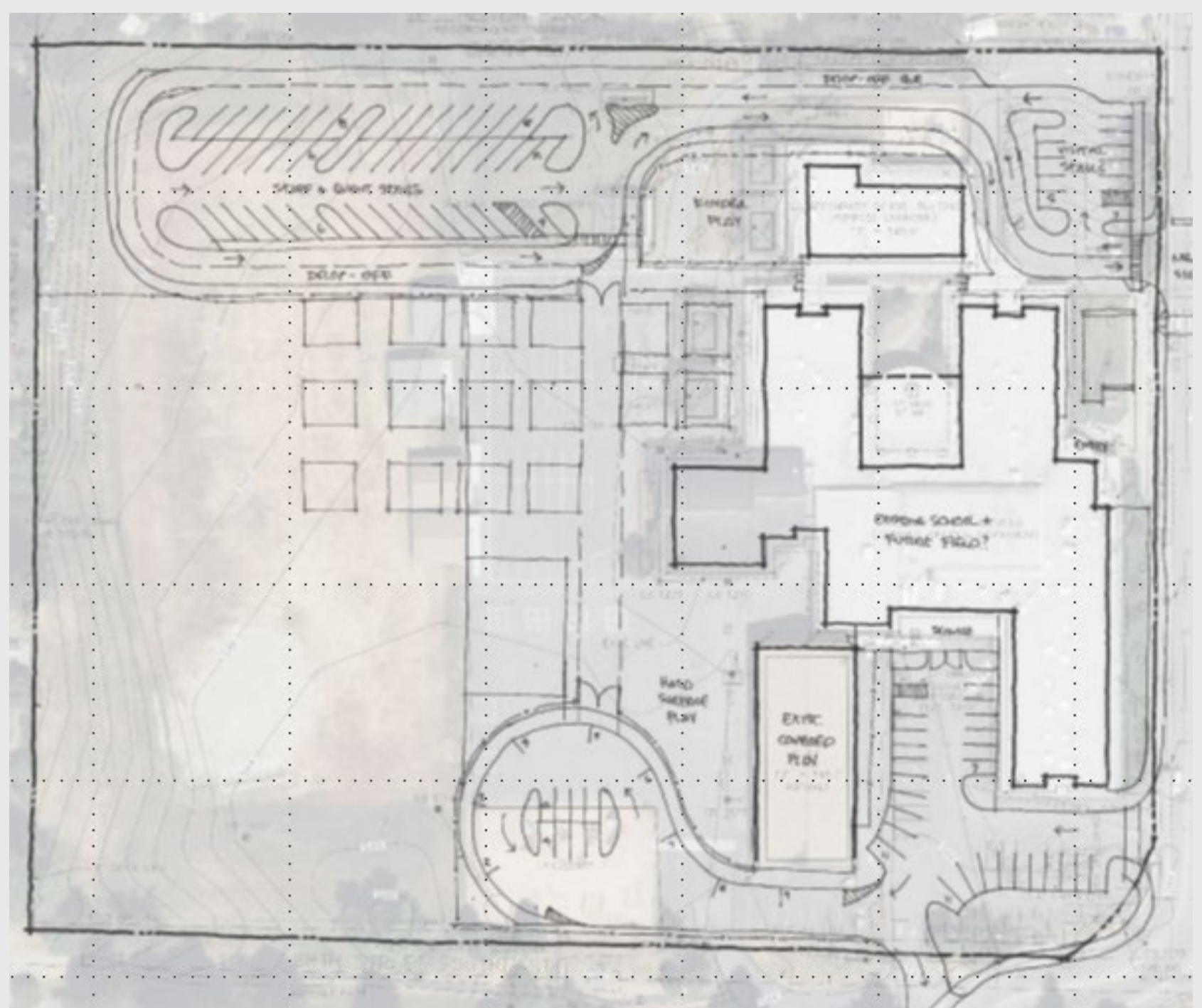
Potential Projects

- Emerson ES bus and parent drop-off \$12.0M
- Intrusion detection integration district-wide \$6.6M
- Expand security camera system district-wide \$3.3M
- Add security film at school entries \$2.0M

Emerson Elementary School



Emerson Elementary School



Emerson Elementary School Safety Upgrades



Intrusion Detection System



Security Camera
Footage



Security Camera Footage



Security Camera Footage



Security Camera
Footage



Security Film at School Entries

